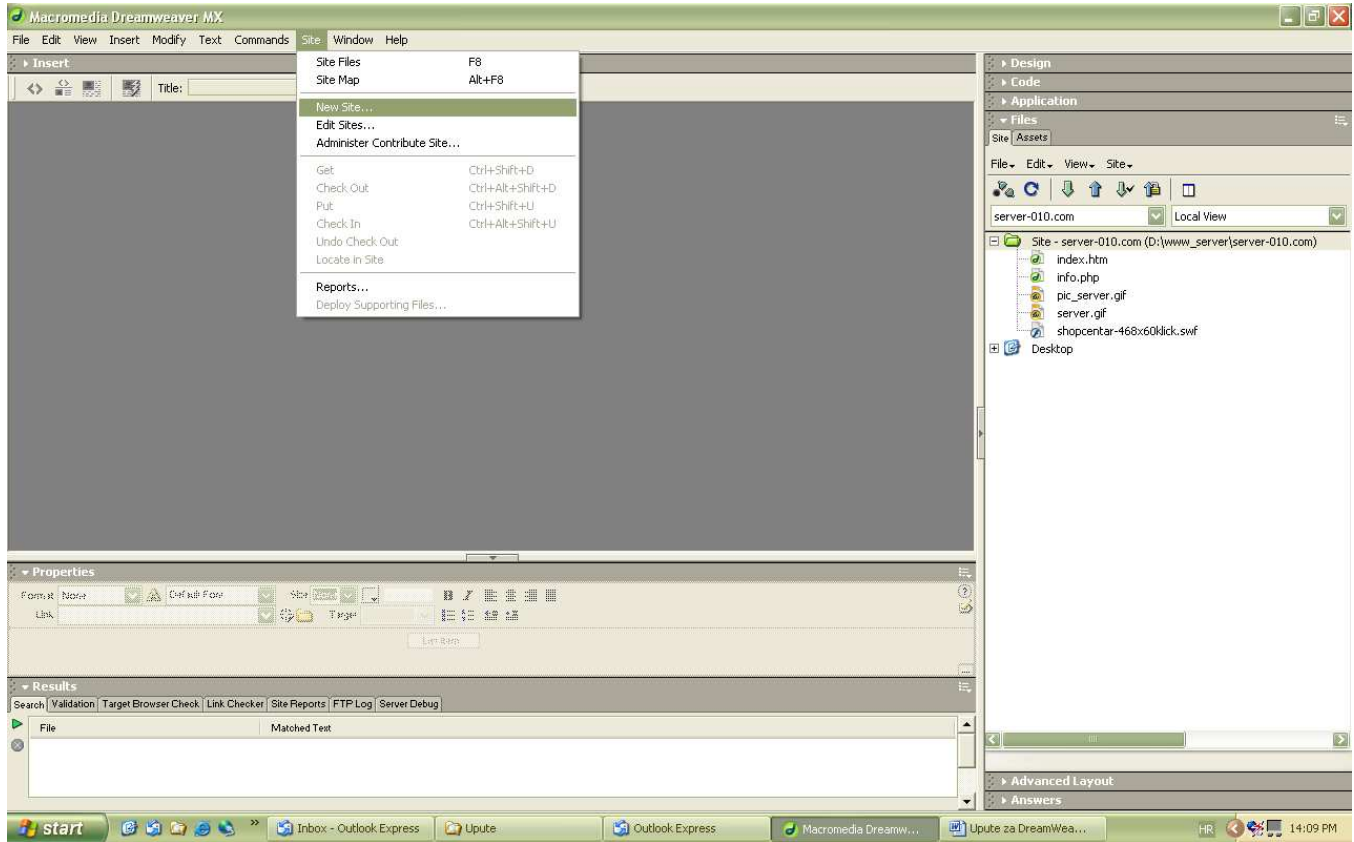




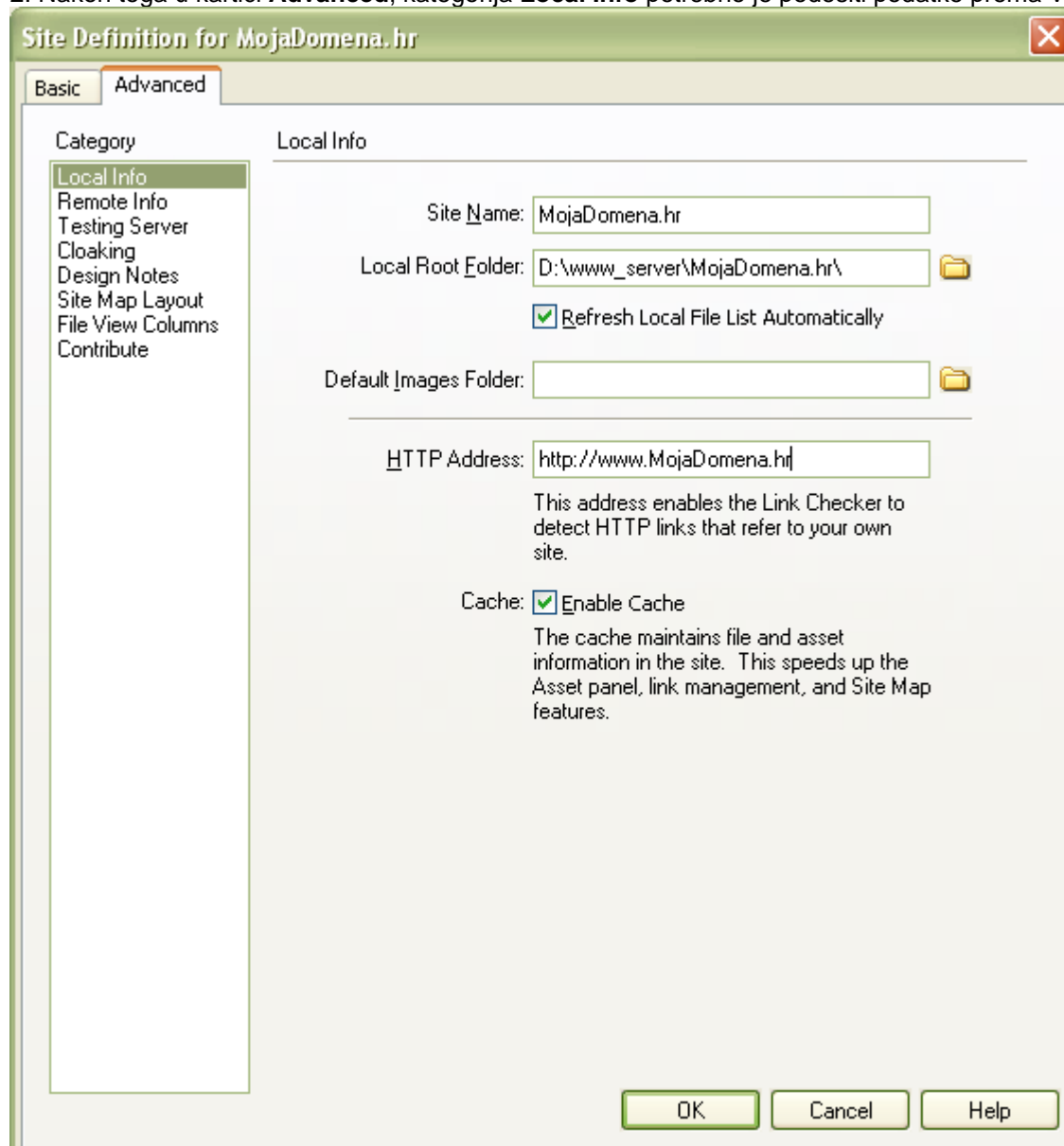
S.H.O.P. CENTAR d.o.o.  
Dankovečka 108/A, Zagreb 10040  
Tel: +385 1 2992 068  
Fax: +385 1 2992 790

## Upute za DreamWeaver ver. 6.1

1. Kreiranje Vaše domene: kliknite na izbornik **Site >>> New Site...**



2. Nakon toga u kartici **Advanced**, kategorija **Local Info** potrebno je podesiti podatke prema Vašim potrebama



3. Zatim u kartici **Advanced**, kategorija **Remote Info** potrebno je podesiti podatke prema Vašim potrebama (obratite pažnju na **Host Directory**: koji smo postavili na **/www/**)

**Ukoliko postavite samo / tada ćete pristupiti samom root-u Vašeg weba.**  
Za ispravno postavljanje web stranica potrebno je postaviti na **/www/**

Također preporučamo da omogućite opciju **Use Passive FTP!**

The image shows a screenshot of a software dialog box titled "Site Definition for MojaDomena.hr". The dialog has two tabs: "Basic" and "Advanced", with "Advanced" selected. On the left side, there is a "Category" list with the following items: "Local Info", "Remote Info" (highlighted), "Testing Server", "Cloaking", "Design Notes", "Site Map Layout", "File View Columns", and "Contribute". The main area of the dialog is titled "Remote Info" and contains the following fields and options:

- Access:** A dropdown menu set to "FTP".
- FTP Host:** A text input field containing "ftp.MojaDomena.hr".
- Host Directory:** A text input field containing "/www/".
- Login:** A text input field containing "username" and a "Test" button.
- Password:** A text input field filled with dots and a "Save" button.
- Use Passive FTP
- Use Firewall and a "Firewall Settings..." button.
- Use SSH encrypted secure login

At the bottom of the dialog, there are three buttons: "OK", "Cancel", and "Help".